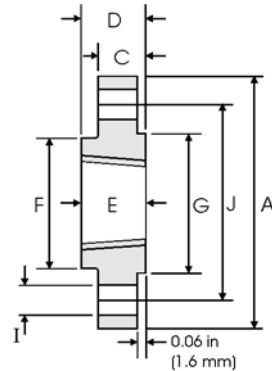


Threaded Flanges - ANSI B16.5



Class 150 lb

Nominal Pipe Size	Pipe		Flange Data				Hub	Raised Face	Drilling Data			Weight
		A	C	D	E	F	G	H	I	J		
	Outside Diameter	Overall Diameter	Flange Thickness min	Overall Length	Threaded length min	Hub Diameter	Face Diameter	Number of Holes	Bolt Hole Diameter	Diameter of Circle of Holes	kg/ piece	
	in mm	in mm	in mm	in mm	in mm	in mm	in mm		in mm	in mm		
1/2	0.840	3.500	0.440	0.620	0.620	1.190	1.380	4	0.620	2.380	0.39	
	21.30	88.90	11.20	15.70	15.70	30.20	35.10		15.70	60.45		
3/4	1.050	3.880	0.500	0.620	0.620	1.500	1.690	4	0.620	2.750	0.56	
	26.70	98.60	12.70	15.70	15.70	38.10	42.90		15.70	69.85		
1	1.315	4.250	0.560	0.690	0.690	1.940	2.000	4	0.620	3.120	0.78	
	33.40	108.0	14.20	17.50	17.50	49.30	50.80		15.70	79.25		
1 1/4	1.660	4.620	0.620	0.810	0.810	2.310	2.500	4	0.620	3.500	1.03	
	42.20	117.3	15.70	20.60	20.60	58.70	63.50		15.70	88.90		
1 1/2	1.900	5.000	0.690	0.880	0.880	2.560	2.880	4	0.620	3.880	1.32	
	48.30	127.0	17.50	22.40	22.40	65.00	73.15		15.70	98.60		
2	2.375	6.000	0.750	1.000	1.000	3.060	3.620	4	0.750	4.750	2.06	
	60.30	152.4	19.10	25.40	25.40	77.70	91.90		19.10	120.7		
2 1/2	2.875	7.000	0.880	1.120	1.120	3.560	4.120	4	0.750	5.500	3.28	
	73.00	177.8	22.40	28.40	28.40	90.40	104.6		19.10	139.7		
3	3.500	7.500	0.940	1.190	1.190	4.250	5.000	4	0.750	6.000	3.85	
	88.90	190.5	23.90	30.20	30.20	108.0	127.0		19.10	152.4		
3 1/2	4.000	8.500	0.940	1.250	1.250	4.810	5.500	8	0.750	7.000	4.81	
	101.6	215.9	23.90	31.75	31.75	122.2	139.7		19.10	177.8		
4	4.500	9.000	0.940	1.310	1.310	5.310	6.190	8	0.750	7.500	5.30	
	114.3	228.6	23.90	33.30	33.30	134.9	157.2		19.10	190.5		
5	5.563	10.00	0.940	1.440	1.440	6.440	7.310	8	0.880	8.500	6.07	
	141.3	254.0	23.90	36.60	36.60	163.6	185.7		22.40	215.9		
6	6.625	11.00	1.000	1.560	1.560	7.560	8.500	8	0.880	9.500	7.45	
	168.3	279.4	25.40	39.60	39.60	192.0	215.9		22.40	241.3		
8	8.625	13.50	1.120	1.750	1.750	9.690	10.62	8	0.880	11.75	12.1	
	219.1	342.9	28.40	44.50	44.50	246.1	269.7		22.40	298.5		
10	10.75	16.00	1.190	1.940	1.940	12.00	12.75	12	1.000	14.25	16.5	
	273.0	406.4	30.20	49.30	49.30	304.8	323.9		25.40	362.0		
12	12.75	19.00	1.250	2.190	2.190	14.38	15.00	12	1.000	17.00	26.2	
	323.8	482.6	31.75	55.60	55.60	365.3	381.0		25.40	431.8		
14	14.00	21.00	1.380	2.250	2.250	15.75	16.25	12	1.120	18.75	34.6	
	355.6	533.4	35.10	57.15	57.15	400.1	412.7		28.40	476.3		
16	16.00	23.50	1.440	2.500	2.500	18.00	18.50	16	1.120	21.25	44.8	
	406.4	596.9	36.60	63.50	63.50	457.2	469.9		28.40	539.8		
18	18.00	25.00	1.560	2.690	2.690	19.88	21.00	16	1.250	22.75	48.9	
	457.2	635.0	39.60	68.30	68.30	505.0	533.4		31.75	577.9		
20	20.00	27.50	1.690	2.880	2.880	22.00	23.00	20	1.250	25.00	61.9	
	508.0	698.5	42.90	73.15	73.15	558.8	584.2		31.75	635.0		
24	24.00	32.00	1.880	3.250	3.250	26.12	27.25	20	1.380	29.50	86.9	
	609.6	812.8	47.80	82.60	82.60	663.4	692.2		35.10	749.3		

Notes

- The thread conforms to ASME B1.20.1 NTP threads as described in Section 10. (The only exceptions are small male and female plain face threaded flanges which use NPSL recount threads.)
- Class 150 threaded flanges are made without a counterbore. Threads are chamfered to the major diameter (approx.) at an angle of 45° (approx.) at the back of the flange.
- Weights are based on manufacturer's data and are approximate.
- For tolerances see page 8-4.