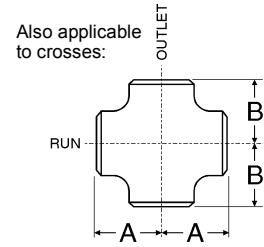
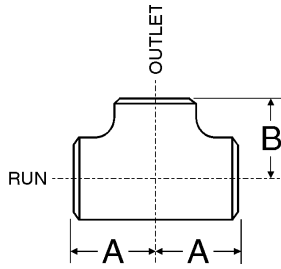
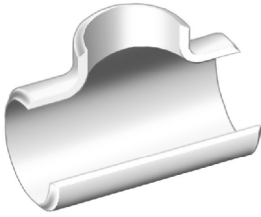


# Equal Tees - ANSI B16.9



Dimensions (based on ASME/ANSI B16.9) and example weights for equal tees

Nominal Pipe Size	OD at Bevelled		Run		Outlet		Weight (Tees only)
	OD		Dimension A		Dimension B		40S/STD <sup>1</sup>
	in	mm	in	mm	in	mm	kg/piece
1/2	0.84	21	1.00	25	1.00	25	0.08
3/4	1.05	27	1.12	29	1.12	29	0.11
1	1.32	33	1.50	38	1.50	38	0.24
1 1/4	1.66	42	1.88	48	1.88	48	0.41
1 1/2	1.90	48	2.25	57	2.25	57	0.60
2	2.38	60	2.50	64	2.50	64	0.87
2 1/2	2.88	73	3.00	76	3.00	76	1.66
3	3.50	89	3.38	86	3.38	86	1.90
3 1/2	4.00	102	3.75	95	3.75	95	-
4	4.50	114	4.12	105	4.12	105	4.13
5	5.56	141	4.88	124	4.88	124	6.55
6	6.62	168	5.62	143	5.62	143	9.73
8	8.62	219	7.00	178	7.00	178	18.0
10	10.75	273	8.50	216	8.50	216	30.8
12	12.75	324	10.00	254	10.00	254	44.3
14	14.00	356	11.00	279	11.00	279	53.7
16	16.00	406	12.00	305	12.00	305	66.3
18	18.00	457	13.50	343	13.50	343	84.1
20	20.00	508	15.00	381	15.00	381	104
22	22.00	559	16.50	419	16.50	419	126
24	24.00	610	17.00	432	17.00	432	140
26	26.00	660	19.50	495	19.50	495	158
28	28.00	711	20.50	521	20.50	521	176
30	30.00	762	22.00	559	22.00	559	203
32	32.00	813	23.50	597	23.50	597	231
34	34.00	864	25.00	635	25.00	635	-
36	36.00	914	26.50	673	26.50	673	294
38	38.00	965	28.00	711	28.00	711	-
40	40.00	1016	29.50	749	29.50	749	363
42	42.00	1067	30.00	762	28.00	711	382
44	44.00	1118	32.00	813	30.00	762	-
46	46.00	1168	33.50	851	31.50	800	-
48	48.00	1219	35.00	889	33.00	838	-

Notes

- For NPS 26 and larger: Dimensions are not applicable to crosses. Also, dimension B is recommended but not required.
- Dimensions quoted in mm are 'Nominal' values from B16.9 (i.e. rounded equivalents of the inch dimensions). Refer to B16.9 for additional 'Max' and 'Min' metric dimensions.
- For tolerances see page 6-2.
- 1 Weights are approximate and based on manufacturers' data (where available) for Schedule 40S/Standard fittings. See page 6-6 for further information.