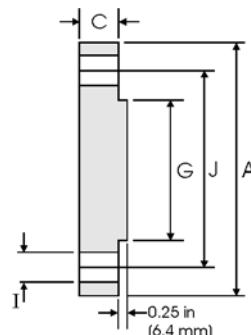
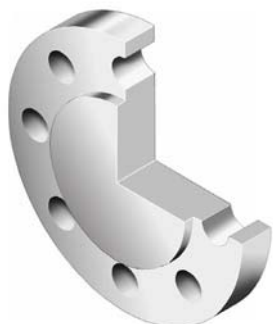


# Blind Flanges - ANSI B16.5



## Class 900 lb

Nominal Pipe Size	Pipe	Flange Data			Raised Face	Drilling Data			Weight
		<b>A</b>	<b>C</b>	<b>G</b>	<b>H</b>	<b>I</b>	<b>J</b>		
	Outside Diameter	Overall Diameter	Flange Thickness min	Face Diameter	Number of Holes	Bolt Hole Diameter	Diameter of Circle of Holes	kg/piece	
in mm	in mm	in mm	in mm	in mm		in mm			
1/2	0.840	4.750	0.880	1.380	4	0.880	3.250	1.77	
	21.30	120.6	22.30	35.10		22.30	82.50		
3/4	1.050	5.120	1.000	1.690	4	0.880	3.500	2.42	
	26.70	130.0	25.40	42.90		22.30	88.90		
1	1.315	5.880	1.120	2.000	4	1.000	4.000	3.57	
	33.40	149.3	28.40	50.80		25.40	101.6		
1 1/4	1.660	6.250	1.120	2.500	4	1.000	4.380	4.15	
	42.20	158.7	28.40	63.50		25.40	111.2		
1 1/2	1.900	7.000	1.250	2.880	4	1.120	4.880	5.75	
	48.30	177.8	31.70	73.15		28.40	123.9		
2	2.375	8.500	1.500	3.620	8	1.000	6.500	10.1	
	60.30	215.9	38.10	91.90		25.40	165.1		
2 1/2	2.875	9.620	1.620	4.120	8	1.120	7.500	14.0	
	73.00	244.3	41.10	104.6		28.40	190.5		
3	3.500	9.500	1.500	5.000	8	1.000	7.500	13.1	
	88.90	241.3	38.10	127.0		25.40	190.5		
4	4.500	11.50	1.750	6.190	8	1.250	9.250	26.9	
	114.3	292.1	44.50	157.2		31.70	234.9		
5	5.563	13.75	2.000	7.310	8	1.380	11.00	36.5	
	141.3	349.2	50.80	185.7		35.00	279.4		
6	6.625	15.00	2.190	8.500	12	1.250	12.50	47.40	
	168.3	381.0	55.60	215.9		31.70	317.0		
8	8.625	18.50	2.500	10.62	12	1.500	15.50	82.5	
	219.1	469.9	63.50	269.7		38.10	393.7		
10	10.75	21.50	2.750	12.75	16	1.500	18.50	122	
	273.0	546.1	69.85	323.9		38.10	469.9		
12	12.75	24.00	3.120	15.00	20	1.500	21.00	173	
	323.8	609.6	79.25	381.0		38.10	533.4		
14	14.00	25.25	3.380	16.25	20	1.620	22.00	206	
	355.6	641.3	85.80	412.8		41.10	558.8		
16	16.00	27.75	3.500	18.50	20	1.750	24.25	259	
	406.4	704.8	88.90	469.9		44.40	615.9		
18	18.00	31.00	4.000	21.00	20	2.000	27.00	367	
	457.2	787.4	101.6	533.4		50.80	685.8		
20	20.00	33.75	4.250	23.00	20	2.120	29.50	463	
	508.0	857.2	107.9	584.2		53.80	749.3		
24	24.00	41.00	5.500	27.25	20	2.620	35.50	876	
	609.6	1041.4	139.7	692.2		66.55	901.7		

### Notes

- Weights are based on manufacturer's data and are approximate.
- For ring joint facings see page 8-6.
- For tolerances see page 8-4.