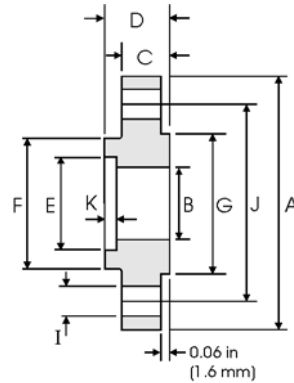


# Socket Welding Flanges - ANSI B16.5



## Class 150 lb

Nominal Pipe Size	Pipe		Flange					Hub	Raised Face	Drilling Data			Weight
		<b>A</b>	<b>B</b>	<b>C</b>	<b>D</b>	<b>E</b>	<b>K</b>	<b>F</b>	<b>G</b>	<b>H</b>	<b>I</b>	<b>J</b>	
	Outside Diameter	Overall Diameter	Inside Diameter	Flange Thickness min	Overall Length	Socket Diameter	Depth of Socket	Hub Diameter	Face Diameter	No. of Holes	Bolt Hole Diameter	Diameter of Circle of Holes	kg/ piece
	in mm	in mm	in mm	in mm	in mm	in mm	in mm	in mm	in mm		in mm	in mm	
1/2	0.840	3.500	0.620	0.440	0.620	0.880	0.380	1.190	1.380	4	0.620	2.380	0.42
	21.30	88.90	15.70	11.20	15.70	22.40	9.600	30.20	35.10		15.70	60.45	
3/4	1.050	3.880	0.820	0.500	0.620	1.090	0.440	1.500	1.690	4	0.620	2.750	0.59
	26.70	98.60	20.80	12.70	15.70	27.70	11.10	38.10	42.90		15.70	69.85	
1	1.315	4.250	1.050	0.560	0.690	1.360	0.500	1.940	2.000	4	0.620	3.120	0.81
	33.40	108.0	26.70	14.20	17.50	34.50	12.70	49.30	50.80		15.70	79.25	
1 1/4	1.660	4.620	1.380	0.620	0.810	1.700	0.560	2.310	2.500	4	0.620	3.500	1.07
	42.20	117.3	35.10	15.70	20.60	43.20	14.20	58.70	63.50		15.70	88.90	
1 1/2	1.900	5.000	1.610	0.690	0.880	1.950	0.620	2.560	2.880	4	0.620	3.880	1.36
	48.30	127.0	40.90	17.50	22.30	49.50	15.70	65.00	73.15		15.70	98.60	
2	2.375	6.000	2.070	0.750	1.000	2.440	0.690	3.060	3.620	4	0.750	4.750	2.10
	60.30	152.4	52.60	19.10	25.40	62.00	17.50	77.70	91.90		19.10	120.7	
2 1/2	2.875	7.000	2.470	0.880	1.120	2.940	0.750	3.560	4.120	4	0.750	5.500	3.33
	73.00	177.8	62.70	22.40	28.40	74.70	19.00	90.40	104.6		19.10	139.7	
3	3.500	7.500	3.070	0.940	1.190	3.570	0.810	4.250	5.000	4	0.750	6.000	3.90
	88.90	190.5	78.00	23.90	30.20	90.70	20.60	108.0	127.0		19.10	152.4	

## Class 300 lb

Nominal Pipe Size	Pipe		Flange					Hub	Raised Face	Drilling Data			Weight
		<b>A</b>	<b>B</b>	<b>C</b>	<b>D</b>	<b>E</b>	<b>K</b>	<b>F</b>	<b>G</b>	<b>H</b>	<b>I</b>	<b>J</b>	
	Outside Diameter	Overall Diameter	Inside Diameter	Flange Thickness min	Overall Length	Socket Diameter	Depth of Socket	Hub Diameter	Face Diameter	No. of Holes	Bolt Hole Diameter	Diameter of Circle of Holes	kg/ piece
	in mm	in mm	in mm	in mm	in mm	in mm	in mm	in mm	in mm		in mm	in mm	
1/2	0.840	3.750	0.620	0.560	0.880	0.880	0.380	1.500	1.380	4	0.620	2.620	0.66
	21.30	95.20	15.70	14.20	22.30	22.40	9.600	38.10	35.10		15.70	66.55	
3/4	1.050	4.620	0.820	0.620	1.000	1.090	0.440	1.880	1.690	4	0.750	3.250	1.15
	26.70	117.3	20.80	15.70	25.40	27.70	11.10	47.70	42.90		19.10	82.50	
1	1.315	4.880	1.050	0.690	1.060	1.360	0.500	2.120	2.000	4	0.750	3.500	1.40
	33.40	123.9	26.70	17.50	26.90	34.50	12.70	53.80	50.80		19.10	88.90	
1 1/4	1.660	5.250	1.380	0.750	1.060	1.700	0.560	2.500	2.500	4	0.750	3.880	1.75
	42.20	133.3	35.10	19.00	26.90	43.20	14.20	63.50	63.50		19.10	98.60	
1 1/2	1.900	6.120	1.610	0.810	1.190	1.950	0.620	2.750	2.880	4	0.880	4.500	2.55
	48.30	155.4	40.90	20.60	30.20	49.50	15.70	69.85	73.15		22.30	114.3	
2	2.375	6.500	2.070	0.880	1.310	2.440	0.690	3.310	3.620	8	0.750	5.000	2.93
	60.30	165.1	52.60	22.30	33.20	62.00	17.50	84.00	91.90		19.10	127.0	
2 1/2	2.875	7.500	2.470	1.000	1.500	2.940	0.750	3.940	4.120	8	0.880	5.880	4.40
	73.00	190.5	62.70	25.40	38.10	74.70	19.00	100.0	104.6		22.30	149.3	
3	3.500	8.250	3.070	1.120	1.690	3.570	0.810	4.620	5.000	8	0.880	6.620	5.92
	88.90	209.5	78.00	28.40	42.90	90.70	20.60	117.3	127.0		22.30	168.1	

### Notes

- Dimension B corresponds to the pipe inside diameter. Values quoted assume 40S/Standard wall thickness.
- Weights are based on manufacturer's data and are approximate.
- For ring joint facings see page 8-6. For tolerances see page 8-4.